



# Cambridge Operatic Society

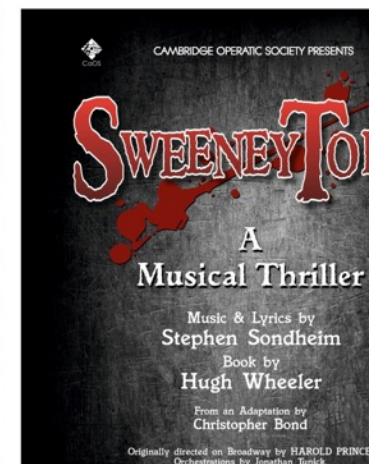
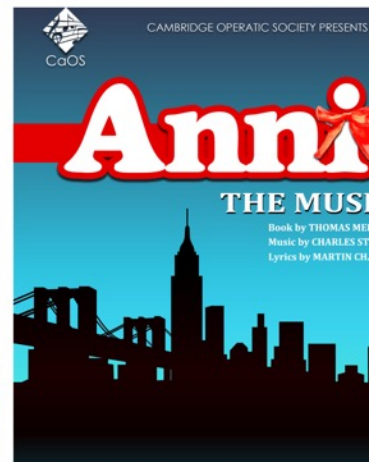
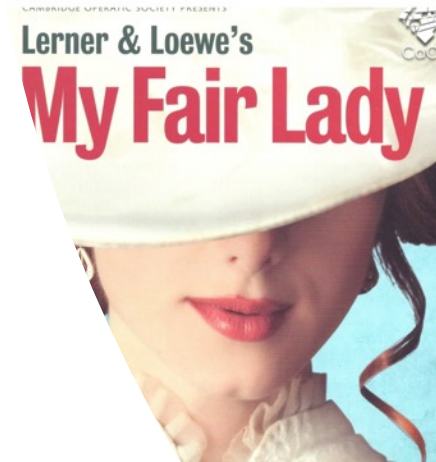
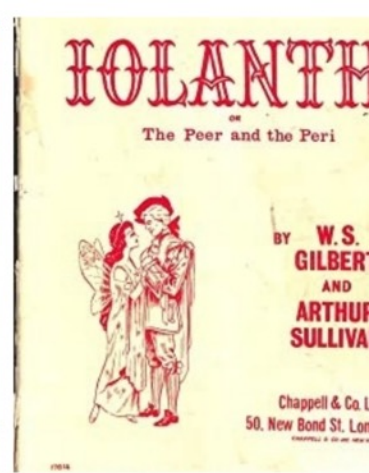
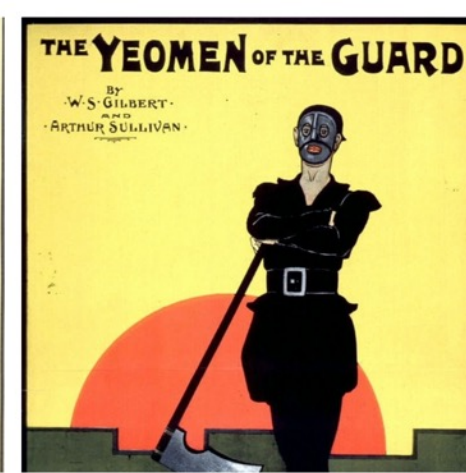
Membership  
2022/2023

# Our history

Founded in 1910, Cambridge Operatic Society's first production was 'The Mikado'.

Since then the Society have performed almost every year (excluding a short break during WWI and WWII). We remain the only amateur company to perform at the Cambridge Arts theatre, with many acknowledging our productions being to the same high standard you would expect from a West End show.

Since our inception we have welcomed over 4000 talented performers, 2000 backstage crew, 30 Directors and 50 Musical Directors, performing to over 360,000 people. Our productions now focus on musicals, but we are certainly proud of our heritage and our impact on the local community we serve.



# Joining us as a member

---

## Standard Membership

Available for anyone with an interest in the arts and who would like to support our Society throughout the year. If you want to be on stage with us, you'll need to join us a member.

## Want to be on stage?

Auditions are held annually and are open to everyone of all abilities and performance background. Joining as a member means that you'll have advanced notice of shows and have priority booking for audition slots.



# Membership Fees

Membership	Fee	Renewal Criteria
<b>Standard Membership</b>	£10	<ul style="list-style-type: none"> <li>• Membership is from the 1<sup>st</sup> June to the 31<sup>st</sup> May each year</li> <li>• Renews automatically on the 1<sup>st</sup> June each year unless cancelled by the member (if you sign up by Direct Debit)</li> </ul>
Performance Fee	Fee	
<b>Performance Fee (16+)</b> Main production membership fee	£65*	<ul style="list-style-type: none"> <li>• Selection is through an audition process and will last for the duration of the production period</li> <li>• If you're already a member then you'll just have the performance fee to pay.</li> <li>• If you're not a member, you'll have to pay the performance fee &amp; standard membership fee</li> </ul>
<b>Performance Fee (child)</b> Main production membership fee	£120	<ul style="list-style-type: none"> <li>• Selection is through an audition process and will last for the duration of the production period</li> <li>• Child performers are not able to vote at our AGM, but can attend all social activities and events organised by the Society</li> </ul>

\* Payable in addition to the standard membership fee for each 'production' the 'member' is cast as a 'performer'

# Other ways to take part

---

## **Backstage Crew**

We are incredibly lucky to have the support of The Penguin Club in Cambridge who source our technical crews, ranging from Stage Managers, Lighting Designers to Wardrobe staff. Visit their website to find out more.

## **Other volunteer roles**

We're always on the look out for people who would like to give us some of their free time to help support us in other ways, from archiving our historical productions, to arranging social events for our members.

## **Our Committee**

Our committee oversees the running of the Society, ensuring it meets the needs of our audiences and the interests of our members. Committee roles are advertised prior to our AGM which is held between April and July each year.





# Membership Benefits

---

- Regular updates and e-newsletters from the Committee
- Advance booking of audition slots
- Access to the members only section on our website
- Social & fundraising events
- Theatre trips
- Join us and vote at our AGM



# Cambridge Operatic Society

Cambridge Operatic Society is a Charitable Incorporated Organisation. Registered Charity  
No: 1184439 *Copyright © 2022 Cambridge Operatic Society, All rights reserved.*